



Alessio Elia

Out of the Magic Circle

UES 103 249-000 Partitur

Universal Edition



Alessio Elia

---

# Out of the Magic Circle

for flute soloist and ensemble

(2022)

---



*Première: 13 November 2022, Pordenone  
Andrea Salvi, flute soloist  
Impronta ensemble  
Andreas Luca Beraldo, conductor*

*Commissione dell'Associazione Musica Pura*

*Dedicated to Andrea Salvi*

## ENSEMBLE

**Flute with Robert Dick's Glissando Headjoint®**

**Clarinet in Bb**

**Piano**

**Violin 1 con scordatura\***

**Violin 2**

**Viola**

**Cello**

**Duration: 6' ca.**

### **\*TABLE OF SCORDATURA**



## GENERAL NOTES

The full score is in C (all instruments).

The Violin 1 is written on two stave systems.

The one with the writing S.R. shows the *suoni reali* (real sounds).

The other with the writing POS shows the positions.

The staff with the writing POS shows the positions as if the instruments were ordinarily tuned.

The accidentals apply for the whole duration of the bar, only in the octave they are placed.

The bar lines serve only to synchronize the parts; bar lines and bar subdivisions never indicate accentuation.

The crescendo that ends without a dynamic symbol means: "crescendo poco".

The crescendo that starts without a dynamic symbols means: crescendo "dal niente"

The diminuendo that ends without a dynamic symbol means: diminuendo "al niente".

( > ) = soft accent.

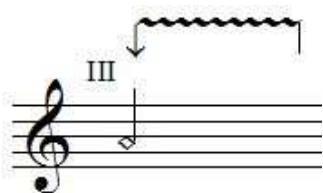
ord. = nullifies what is previously indicated in the part.

## Arrows

↑ just a bit higher (14 cents ca.). Used also for glissandos starting from the nut.

## SYMBOLS FOR EACH INSTRUMENT

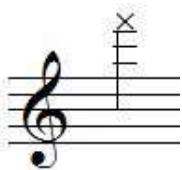
### Strings



Harmonic vibrato.

Quickly alternate grazed position (the position used for the harmonics) to half-pressure position.

The wavy line shows the duration of the effect. The arrow shows the attack and the vertical line shows the end of the effect.



The "x" head-note shows the nearest position to the bridge (highest non-pitched position). Sounds like a rustle.

Every time it is used in a glissando, means harmonic glissando starting from the highest non-pitched position.



Bending. Left hand: pull to the side the string in order to make the frequency of the pitch higher.

When used with a continuous wavy line indicates a distorted sound realized by catching the string with the finger and shaking it nervously to the left side.

A.F. = Alternate fingers as a trill in the Piano

Harmonics: The diamond head-notes show the positions of the harmonics (where to touch the string). Roman numbers refer to the string on which to play.

Glissando: All the glissandi between two diamond note-head notes are harmonic glissando.

Players are asked to point out clearly each sound of the harmonic series.

In absence of "legato" symbol, play "alla corda".

## Clarinet



Pedal key effect (bisbigliando).

The waving line indicates the duration of the effect.

The vertical line shows the ending of it.

When it is used measured, the rhythm is clearly shown.

## Flute with Robert Dick's Glissando Headjoint®

I = Slide inwards

0 = Slide outwards



# Out of the Magic Circle

Score in C

Antirituale per l'annullamento degli incantesimi

Commissione dell'Associazione Musica Pura

ad Andrea Salvi

Alessio Elia  
(\*1979)

The score is for a 6/4 piece. It begins with a tempo marking of quarter note = 75. The Flute part starts with a whole note G#4, followed by a half note G#4, and then a half note G#4 with a slur over it. The Clarinet in Bb part starts with a whole note G#4. The Piano part starts with a whole note G#4 in the right hand and rests in the left hand. The Cello part starts with a whole rest, followed by a half note G#4. The score includes dynamic markings such as *ppp*, *mp*, and *mf*. There are also performance instructions like "from the position used before" and "long pedal till bar 11".

Flute

Clarinet in B $\flat$

Piano

S.R.

Violin 1

POS.

Violin 2

Viola

Cello

$\text{♩} = 75$

*ppp* *mp*

*ppp*

*mf*

long pedal till bar 11

from the position used before

I

*p*

This musical score page features eight staves for various instruments, all in 6/4 time. The Flute (Fl.) part begins with a triplet of eighth notes, followed by a long melodic line with a slur and a *mf* dynamic. The B♭ Clarinet (B♭ Cl.) part has a triplet of eighth notes followed by a long rest. The Piano (Pno.) part consists of a single chord marked *mp*. The Saxophone (S.R.) part has a triplet of eighth notes followed by a long rest and a final note marked with a sharp sign. The Violin 1 (Vno. 1) part has a triplet of eighth notes followed by a long rest and a final note marked with a Roman numeral III. The Viola (Vla.) part has a triplet of eighth notes followed by a long rest. The Violin 2 (Vno. 2) part has a triplet of eighth notes followed by a long rest. The Violoncello (Vc.) part begins with a triplet of eighth notes, followed by a long melodic line with a slur and a *mp* dynamic.

Fl.

B♭ Cl.

Pno.

S.R.

Vno. 1

POS.

Vno. 2

Vla.

Vc.

*mf*

*mp*

*pp*

*mp*



no Flz.                      a bit Flz.                      no Flz.

Fl.                      5                      5                      5                      5

B♭ Cl.

Pno.                      p

S.R.                      - 15                      b

Vno. 1

POS.                      A.F. IV                      p                      mf

Vno. 2                      pp                      mp

Vla.

Vc.                      A.F.                      I                      I                      mp

Detailed description: This page of a musical score features five systems of staves. The first system includes Flute (Fl.), B♭ Clarinet (B♭ Cl.), and Piano (Pno.). The Flute part has a melodic line with a fermata and a trill, marked with 'no Flz.', 'a bit Flz.', and 'no Flz.' above it. The Piano part has a single chord marked 'p'. The second system includes String Quartet (S.R.), Violin 1 (Vno. 1), and Viola (Vla.). The S.R. part has a fermata and a trill marked '- 15' and 'b'. The Violin 1 part has a melodic line with a fermata and a trill, marked 'A.F. IV', 'p', and 'mf'. The third system includes Violin 2 (Vno. 2) and Viola (Vla.). The Violin 2 part has a melodic line with a fermata and a trill, marked 'pp' and 'mp'. The fourth system includes Violin 2 (Vno. 2) and Viola (Vla.). The Violin 2 part has a melodic line with a fermata and a trill, marked 'pp' and 'mp'. The fifth system includes Violin 2 (Vno. 2) and Viola (Vla.). The Violin 2 part has a melodic line with a fermata and a trill, marked 'A.F.', 'I', 'I', and 'mp'.

Fl. *mp* *mp < mf* gizmo

B♭ Cl.

Pno. *p* *mf* 15<sup>ma</sup>

S.R.

Vno. 1

POS.

Vno. 2 *< mf*

Vla. *p*

Vc. *< mf* *mf*

Detailed description: This is a page of a musical score for a chamber ensemble. The score is written for nine instruments: Flute (Fl.), B♭ Clarinet (B♭ Cl.), Piano (Pno.), Saxophone (S.R.), Violin 1 (Vno. 1), Percussion (POS.), Violin 2 (Vno. 2), Viola (Vla.), and Violoncello (Vc.). The music is in 6/4 time and consists of three measures. The Flute part features a melodic line with a dynamic marking of *mp* in the first measure and *mp < mf* in the second. Above the Flute staff, there are several circles and a square, and a wavy line labeled 'gizmo' in the second measure. The Piano part has a dynamic marking of *p* in the first measure and *mf* in the second, with a 15<sup>ma</sup> (15th fingering) indicated in the second measure. The Percussion part has a series of notes in the first measure and a single note in the second. The Violin 2 part has a dynamic marking of *< mf* in the first measure. The Viola part has a dynamic marking of *p* in the second measure. The Violoncello part has a dynamic marking of *< mf* in the first measure and *mf* in the second. The score includes various musical notations such as slurs, accents, and dynamic markings.

12

Fl. *mp senza dim.* *mp* D

B♭ Cl.

Pno. *mp* *mp*

S.R.

Vno. 1

POS. III *p* *mf* II - 15

Vno. 2 *p* *mf*

Vla. *f* *p* *mf*

Vc. *p* I

16

Fl. *mp* *mf* same fingerings as before I → O

B♭ Cl.

Pno. *mf*

S.R.

Vno. 1

POS. *mp*

Vno. 2 *p* *mf*

Vla. A.F. II II *p* *mf* *mp*

Vc. *mf*

Detailed description: This page of a musical score, numbered 7, contains staves for Flute (Fl.), B♭ Clarinet (B♭ Cl.), Piano (Pno.), Saxophone (S.R.), Violin 1 (Vno. 1), Viola (Vla.), Violin 2 (Vno. 2), and Violoncello (Vc.). The score begins at measure 16. The Flute part features a melodic line with slurs and dynamics of *mp* and *mf*. A large slur spans measures 16-18, with the instruction "same fingerings as before" and a fingering change from "I" to "O" indicated above it. The B♭ Clarinet and Saxophone parts are mostly silent, with rests. The Piano part has a chord in measure 17 marked *mf*. Violin 1 and Violin 2 have melodic lines with dynamics *mp* and *p* *mf* respectively. The Viola part includes a section marked "A.F. II" and "II" with dynamics *p*, *mf*, and *mp*. The Violoncello part has a melodic line starting at measure 16 with a dynamic of *mf*. The score includes various musical notations such as slurs, ties, and dynamic markings.

ORD. gizmo F# gizmo

Fl. *mf* > *p* < *mf* *mp*

B♭ Cl. *p*

Pno. *mf* *f*

S.R.

Vno. 1 *mp*

Vno. 2 *p* *mf* *senza dim.* *mp*

Vla. *p* *mf*

Vc. *mp* >

D D# I → O

loco

8va



Fl. 22 *mp* *p* *mp* ORD. G# + D#

B♭ Cl. 22

Pno. 22 *mf* *mp* *loco*

S.R. 22 -15 *8va*

Vno. 1 22 II III *mp* *mf* *p* *8va*

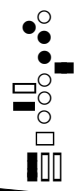
POS. 22 *mp* *mf* *p*

Vno. 2 22 I *pp* *mp* *pp*

Vla. 22

Vc. 22

Detailed description: This page of a musical score contains parts for Flute (Fl.), B♭ Clarinet (B♭ Cl.), Piano (Pno.), Saxophone (S.R.), Violin 1 (Vno. 1), Viola (Vla.), Violin 2 (Vno. 2), and Violoncello (Vc.). The score is in 2/4 and 4/4 time signatures. The Flute part features a melodic line with dynamics *mp*, *p*, and *mp*, and includes fingerings (3), ornaments (ORD.), and a G# note. The Piano part has dynamics *mf* and *mp*, with a *loco* section. The Violin 1 part includes fingerings II and III, dynamics *mp*, *mf*, and *p*, and an 8va marking. The Violin 2 part has dynamics *pp*, *mp*, and *pp*. The Viola and Violoncello parts are mostly rests.



ORD.  
B

I → O

Fl. 25 (3+2) *mp* *mf*

B♭ Cl. 25 *p*

Pno. 25 *mf* *loco*

S.R. 25 *8va* -29 *8va*

Vno. 1 POS. 25 *8va* *p* *mf*

Vno. 2 25 *pp* *pp* *mp*

Vla. 25 *mp*

Vc. 25 *pp* *mp* *p*

*pp* *p* *mp* *mp* *p*

(produces a descending glissando of C)  
- B

F

Fl.

B $\flat$  Cl.

Pno.

S.R.

Vno. 1

POS.

Vno. 2

Vla.

Vc.

28

3

*p*  $\curvearrowright$  *mf*

*mf*

(8<sup>va</sup>)

3

- 29

8<sup>va</sup>

I

3

*pp* *mp*

Tast.

3

*p*

3

I

*pp*  $\curvearrowright$  *mp*  $\curvearrowright$

l.v.

*multiphonic*

I → O

31

Fl.

*mf*

*measured key-pedal trill*

31

B♭ Cl.

*ppp*

*mp*

31

Pno.

*mp*

31

S.R.

- 31

7.

31

POS.

31

Vno. 2

IV

*mp*

31

blowing into "F" holes

Vla.

*p* *mf* *p* *mf*

31

Vc.

Fl. *mf* *mp* hold the G key down

B♭ Cl.

Pno. *mp*

S.R. -13 -15 -15

Vno. 1 A.F. II II Pont. II

POS. *mf* *p* 0

Vno. 2 III

Vla. I A.F. I *mf*

Vc.

This page of a musical score contains the following parts and markings:

- Fl. (Flute):** Starts at measure 37 with a half note G4. A large slur covers measures 37-40. A fingering diagram above the staff shows fingerings for G4 (1), A4 (2), B4 (3), and C5 (4). A thumb trill is indicated above the slur. Dynamics include *mp*.
- B♭ Cl. (B♭ Clarinet):** Rests in measures 37-40.
- Pno. (Piano):** Rests in measures 37-40. In measure 40, there is a chord with a dynamic of *mp*. An 8va marking is present above the staff.
- S.R. (String Quartet):** Shows fingerings for measures 37-40. Fingerings include -15, -15, -15, -29, and -29. An 8va marking is present above the staff.
- POS. (Posaune):** Starts at measure 37 with a half note G4. Dynamics include *mp*.
- Vno. 1 (Violin 1):** Starts at measure 37 with a half note G4. Dynamics include *mp*.
- Vno. 2 (Violin 2):** Starts at measure 37 with a half note G4. Dynamics include *mp*. Markings include "A.F. III" and "III".
- Vla. (Viola):** Starts at measure 37 with a half note G4. Dynamics include *p*.
- Vc. (Violoncello):** Starts at measure 37 with a half note G4. Dynamics include *mp*. Marking includes "pizz.".

This musical score page, numbered 15, features five staves. The Flute (Fl.) staff at the top contains a melodic line with fingerings (I → O → I), slurs, and triplets, marked *mf*. The B♭ Clarinet (B♭ Cl.) staff is mostly silent. The Piano (Pno.) staff shows a harmonic accompaniment with slurs and an *8va* marking. The String Quartet (S.R., Vno. 1, POS., Vno. 2) and Violoncello (Vc.) staves include various markings such as *p*, *mf*, *pp*, and *mp*, along with technical instructions like *arco* and *Ord. III A.F. III*. The score is divided into three measures with time signatures of 4/8, 4/4, 6/4, and 5/4.





(produces a descending glissando of D#)

D #

F #

Fl. *mf* 5 *p* *mf*

B♭ Cl. (produces a descending glissando of G#)

Pno. *mp* *mf* 8<sup>va</sup>

S.R.

Vno. 1

POS. *p* *mf* *p* blowing into the "F" holes

Vno. 2 *p* *mf* I

Vla. *mf* IV

Vc. *mf*

O → I + D#

49 *mf* *p* *f*

49 *p*

49 *mp*

49 *p*

49 *p* *f* *mf*

49 *p* *f*

49 *p*

49 *p*

blowing into the "F" holes

49 *p* *f*

49 *p*

49

49

51 + D # *sim.* 5 5 5 *p* + D (produces a descending glissando of D) *p* *mf* 5

51 B♭ Cl. *ppp* 8va

51 Pno. *mp* *mp* 8vb

51 S.R.

51 Vno. 1

51 POS.

51 Vno. 2

51 Vla. III *p* *mf*

51 Vc. *ppp*

Detailed description: This page of a musical score, numbered 19, contains measures 51 through 53. The score is for a full orchestra and includes parts for Flute (Fl.), B♭ Clarinet (B♭ Cl.), Piano (Pno.), Saxophone (S.R.), Violin 1 (Vno. 1), Viola (Vla.), Violin 2 (Vno. 2), and Violoncello (Vc.).  
- **Flute (Fl.):** Measure 51 features a rapid sixteenth-note scale starting on D# with a *sim.* (sustained) marking. Measures 52 and 53 show a descending glissando of the D note, starting with a *p* dynamic and moving to *mf*. A diagram above the staff shows a series of circles representing the glissando, with a wavy line and the text "(produces a descending glissando of D)".  
- **B♭ Clarinet (B♭ Cl.):** Measures 52 and 53 feature a sustained note with a *ppp* dynamic. An 8va (octave up) marking is present.  
- **Piano (Pno.):** Measures 52 and 53 feature a sustained note with a *mp* dynamic. An 8vb (octave down) marking is present.  
- **Saxophone (S.R.):** Measures 52 and 53 are silent.  
- **Violin 1 (Vno. 1):** Measures 52 and 53 are silent.  
- **Viola (Vla.):** Measures 52 and 53 feature a sustained note with a *p* dynamic, transitioning to *mf* in measure 53. A Roman numeral III is written above the staff.  
- **Violin 2 (Vno. 2):** Measures 52 and 53 are silent.  
- **Violoncello (Vc.):** Measures 52 and 53 feature a sustained note with a *ppp* dynamic.

This musical score page, numbered 20, features five staves: Flute (Fl.), B♭ Clarinet (B♭ Cl.), Piano (Pno.), String Quartet (S.R., Vno. 1, POS., Vno. 2), and Violoncello (Vc.).

- Flute (Fl.):** Starts at measure 53 in 5/4 time with a dynamic of *f*. It features a melodic line with a wavy line above it labeled 'D'. The piece changes to 4/4 time at measure 54. The flute plays a series of notes with fingerings '5' and '5' indicated.
- B♭ Clarinet (B♭ Cl.):** Remains silent throughout the page.
- Piano (Pno.):** Starts at measure 53 in 5/4 time with a dynamic of *mf*. It features a wavy line above it labeled '(8va)'. The piano changes to 4/4 time at measure 54. A wavy line below it labeled '(8vb)' indicates a lower register. A  $\frac{1}{2}$  note is marked at the end of the section.
- String Quartet (S.R., Vno. 1, POS., Vno. 2):** Vno. 1 and POS. have notes in the 4/4 section, with dynamics of *mf* and *mf* respectively. POS. has a 'III' marking. Vno. 2 and S.R. are silent.
- Violoncello (Vc.):** Starts at measure 53 in 5/4 time with a dynamic of *p*. It features a wavy line above it labeled 'Pont.' and a '0' marking. The cello changes to 4/4 time at measure 54.

*Rispettando le unità di tempo,  
il più veloce possibile*

Fl. *f*

B $\flat$  Cl.

Pno. *ff* *f*

S.R.

Vno. 1

POS. *mf*

Vno. 2

Vla.

Vc.

Fl. 58  $f$   $\rightarrow$  I  $8^{va}$   $fff$

B $\flat$  Cl. 58

Pno. 58

S.R. 58

Vno. 1 58

POS. 58

Vno. 2 58  $mp$   $mf$  I II

Vla. 58  $f$  IV

Vc. 58

Detailed description: This page of a musical score, numbered 22, features eight staves for different instruments. The Flute (Fl.) staff (top) begins at measure 58 with a series of triplets, marked  $f$ . An arrow points to the first measure of the triplet sequence with the Roman numeral 'I'. The Flute part continues with more triplets, marked  $fff$ , and includes an octave sign ( $8^{va}$ ) above the staff. The B $\flat$  Clarinet (B $\flat$  Cl.) staff has a whole rest in measure 58. The Piano (Pno.) is represented by two staves, both with whole rests in measure 58. The Saxophone (S.R.) staff has a whole rest in measure 58. The Violin 1 (Vno. 1) staff has a whole rest in measure 58. The Violin 2 (Vno. 2) staff starts at measure 58 with a half note, marked  $mp$ , and has a fingering 'I' above it. It then has a long, sweeping line that rises to a half note marked  $mf$  with a fingering 'II' above it. The Viola (Vla.) staff has a whole rest in measure 58 and then a half note marked  $f$  with a fingering 'IV' above it. The Violoncello (Vc.) staff has a whole rest in measure 58.

59

Fl.

*p*

B♭ Cl.

59

Pno.

*p*

*p*

S.R.

Vno. 1

59

POS.

*p*

Vno. 2

59 blowing into "F" holes

*pp* *mp* *pp* *mp* *pp* *mp*

Vla.

59

*molto*

*p*

Molto al Pont. IV

Vc.

59

*p* *mp*

Detailed description: This page of a musical score covers measures 59 to 64. The instruments are Flute (Fl.), B♭ Clarinet (B♭ Cl.), Piano (Pno.), String Quartet (S.R., Vno. 1, POS., Vno. 2), Viola (Vla.), and Violoncello (Vc.). The key signature has one sharp (F#) and the time signature is 6/4. The Flute part features a complex melodic line with many beamed sixteenth notes, starting with a piano (*p*) dynamic. The Piano part has a similar melodic line in the right hand and a more rhythmic accompaniment in the left hand, also starting with *p*. The Violoncello part has a simple melodic line starting with *p* and moving to *mp* by measure 64. The Viola part has a melodic line starting with *p* and moving to *mp*. The Violin 2 part has a rhythmic pattern of eighth notes with dynamics ranging from *pp* to *mp*. The Violin 1 and Position (POS.) parts have a melodic line starting with *p*. The B♭ Clarinet and String Quartet parts are mostly silent, indicated by rests.

63

Fl.

*p*

3

3

63

B♭ Cl.

63

Pno.

*p*

*segue ped. till the end*

63

S.R.

63

Vno. 1

63

POS.

A.F. III III

*p*

63

Vno. 2

63

Vla.

63

Vc.

3

*p*

Detailed description: This page of a musical score covers measures 63 and 64. The score is for a chamber ensemble including Flute (Fl.), B♭ Clarinet (B♭ Cl.), Piano (Pno.), Saxophone (S.R.), Violin 1 (Vno. 1), Viola (Vla.), and Violoncello (Vc.). The music is in 4/4 time. Measure 63 begins with a piano (*p*) dynamic. The Flute part features a melodic line with trills and triplets. The Piano part consists of a sustained chord. The Saxophone part has a few notes. The Violoncello part starts with a triplet. Measure 64 continues the melodic lines, with the Flute and Saxophone parts showing more complex rhythmic patterns. The Piano part remains sustained. The Violoncello part has a long, sustained note. The score includes various musical notations such as slurs, trills, triplets, and dynamic markings.



65 Fl. *mp*

65 B♭ Cl.

65 Pno. *mp* *loco*

65 S.R.

65 Vno. 1

65 POS.

65 Vno. 2 *mp* III

65 Vla. A.F. IV *mp*

65 Vc.

Detailed description of the musical score: The score is for page 25, measures 65 to 74. It features seven staves for different instruments: Flute (Fl.), B♭ Clarinet (B♭ Cl.), Piano (Pno.), Saxophone (S.R.), Violin 1 (Vno. 1), Viola (Vla.), Violin 2 (Vno. 2), and Violoncello (Vc.). The music is in 4/4 time, with a key signature of one flat (B♭). Measure 65 starts with a dynamic marking of *mp*. The Flute part has a melodic line with a slur over measures 65-68 and a triplet of eighth notes in measure 71. The Piano part has a complex texture with slurs and a *loco* marking in measure 71. The Viola part has a tremolo effect in measure 65, marked *mp*. The Violoncello part has a long slur over measures 65-68. The Saxophone, Violin 1, and B♭ Clarinet parts are mostly silent, indicated by rests. The Violin 2 part has a triplet of eighth notes in measure 71, marked *mp*. The score ends at measure 74.

68 *mf*

Fl.

B♭ Cl.

Pno.

filtering

S.R.

Vno. 1

POS.

*mp*

Vno. 2

blowing into the "F" holes

*f*

Vla.

blowing into the "F" holes

*f*

Vc.

Detailed description: This page of a musical score covers measures 68, 69, and 70. The score is for a woodwind and string ensemble. The Flute (Fl.) part begins in measure 68 with a half note G4 (marked with a sharp) and a half note G5, both marked *mf*. In measure 69, the Flute plays a half note G5 and a half note G6, also marked *mf*. In measure 70, the Flute plays a half note G6 and a half note G7, marked *mf*. The B♭ Clarinet (B♭ Cl.) part has rests in measures 68 and 69, and a half note G5 in measure 70. The Piano (Pno.) part has rests in measures 68 and 69, and a half note G5 in measure 70. The String Quartet (S.R.) part has rests in measures 68 and 69, and a half note G5 in measure 70. The Violin 1 (Vno. 1) part has rests in measures 68 and 69, and a half note G5 in measure 70. The Violin 2 (Vno. 2) part has rests in measures 68 and 69, and a half note G5 in measure 70. The Viola (Vla.) part has rests in measures 68 and 69, and a half note G5 in measure 70. The Violoncello (Vc.) part has rests in measures 68 and 69, and a half note G5 in measure 70. The score includes various performance instructions such as *mf*, *mp*, *f*, and *filtering*. There are also annotations for the string parts: "blowing into the 'F' holes" for Vno. 2 and Vla., and "III" for Vno. 1. The score is written in 7/4 time and features a key signature of one sharp (F#).